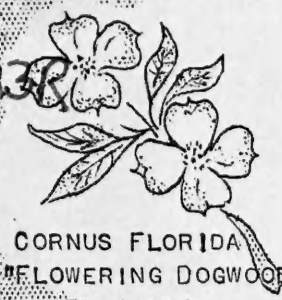


SB115
Z9C65623R
R



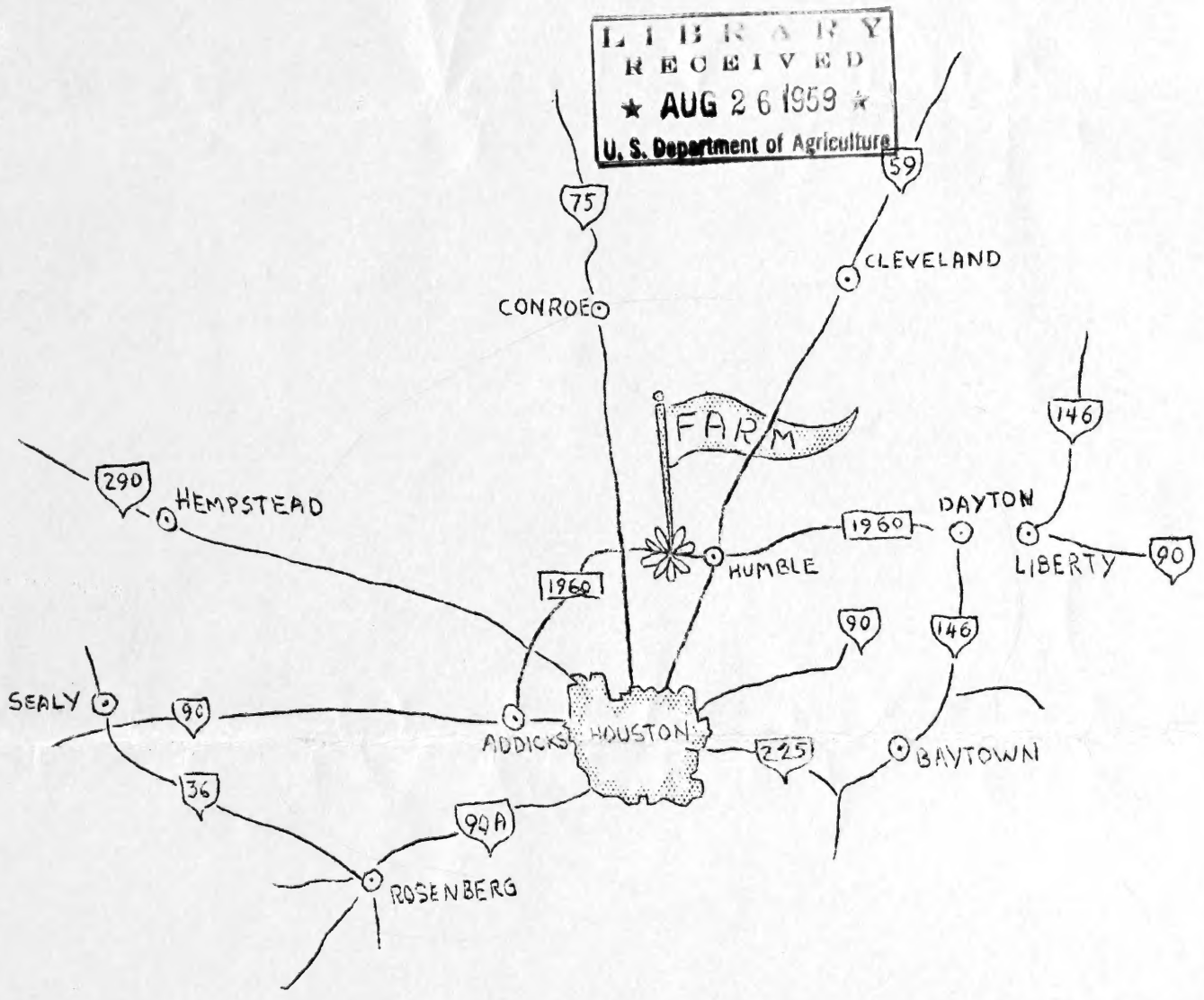
CORNUS FLORIDA
"FLOWERING DOGWOOD"
OFTEN CALLED
CORNELIUS TREE

REF/RAR Cornelius NURSERIES, INC.

GENERAL OFFICES
4621 SAN FELIPE ROAD

MADISON 3-0683

P. O. BOX 1762
HOUSTON 1, TEXAS



WHOLESALE LIST FALL 1959

GROWERS OF QUALITY
CONTAINER & FIELD GROWN

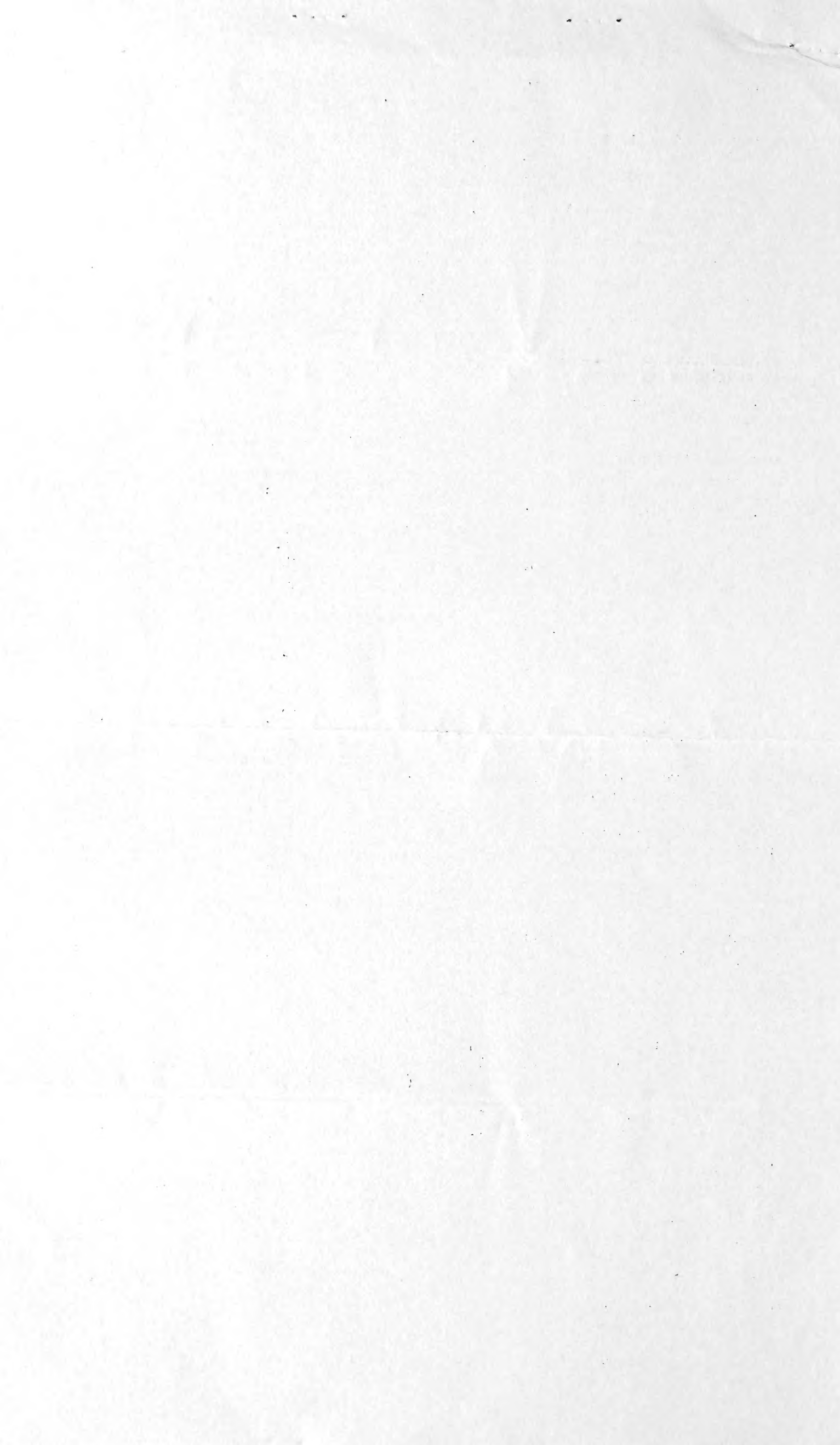
"PLANTS WITH A GROWING REPUTATION"

ACACIA FARNESIANA (HUISACHE)	5 GL	1.85	CLEYERA JAPONICA	1 GL	.65
				2 GL	1.50
ACACIA FLORIBUNDA (EVERBLOOMING ACACIA)	5 GL	1.85	CORNUS FLORIDA (FLOWERING DOGWOOD)	1 GL	.65
				5 GL	1.75
AGAVE AMERICANA (CENTURY PLANT)	1 GL	.60	CUPHEA HYSSOPIFOLIA - RED	1 GL	.60
	5 GL	1.65	" " - WHITE	1 GL	.60
	20 GL	10.00			
AGAVE LECHEGUILLA (LECHEGUILLA)	5 GL	1.65	CUPHEA MICROPETALA	1 GL	.60
				5 GL	1.75
ALBIZZIA JULIBRISSIN (MIMOSA)	5 GL	1.50	CYDONIA JAPONICA (JAPANESE QUINCE)	1 GL	.55
				5 GL	1.75
ANISACANTHUS THURBERI (FIRECRACKER)	1 GL	.60	DAUBENTONIA TRIPETII (RED LOCUST)	1 GL	.55
	5 GL	1.75			
ARDISIA PUSILLA (CREEPING ARDISIA)	1 GL	.65	DRACENA INDIVISA	1 GL	.60
				5 GL	2.00
ASPIDISTRA ELATIOR (IRON PLANT)	1 GL	.60	EHRETIA ELLIPTICA (ANAQUA)	1 GL	.85
AUCUBA JAPONICA VARIEGATA (GOLDDUST PLANT)	5 GL	2.50	ELEAGNUS MACROPHYLLA (BROADLEAF ELEAGNUS)	5 GL	1.65
BELOPERONE COMOSA (RED SHRIMP PLANT)	1 GL	.60	ELEAGNUS PUNGENS (SMALL LEAF ELEAGNUS)	5 GL	1.65
BIOTA ORIENTALIS "BLUE SPIRE" (BLUE SPIRE ARBORVITAE)	1 GL	.55	ERIOBOTRYA JAPONICA (LOQUAT)	1 GL	.55
BUXUS JAPONICA (JAPANESE BOXWOOD)	1 GL	.55	ESCALLONIA MONTEVIDENSIS (WHITE FLOWERED)	1 GL	.60
CALLISTEMON LANCEOLATUS (BOTTLE BRUSH)	1 GL	.65	ESCALLONIA ORGANENSIS (APPLE BLOSSOM PINK)	1 GL	.60
	5 GL	1.75			
CALLISTEMON PHOENICIUS (LOW PROSTRATE BOTTLEBRUSH)	5 GL	2.50	EUCALYPTUS CAMALDULENSIS (RED GUM)	5 GL	1.75
CALLISTEMON PINIFOLIUS	5 GL	2.00	EUCALYPTUS CINERA (SILVER DOLLAR)	2 GL	1.50
CALLISTEMON RIGIDUS (UPRIGHT BOTTLEBRUSH)	1 GL	.65	EUCALYPTUS POLYANTHEMOS (REDBOX GUM)	5 GL	1.75
CALLISTEMON SPECIOSUS (IMPROVED BOTTLEBRUSH)	5 GL	2.00	EUCALYPTUS VIMINALIS (MANNA GUM)	5 GL	1.75
CALLITRIS CUPRESSIFORMIS (DROOPING CYPRESSPINE)	2 GL	1.50	EUONYMUS RADICANS (CREEPING EUONYMUS)	1 GL	.55
CARISSA PROSTRATA (PROSTRATE NATAL PLUM)	1 GL	.65	FATSIA JAPONICA (ARALIA SIEBOLDI)	2 GL	1.50
CASUARINA STRICTA (BEEFWOOD)	5 GL	1.65	FEIJOA SELLOWIANA (GUAVA)	1 GL	.55
				5 GL	1.65
CATALPA BIGNONIOIDES (CATALPA)	5 GL	1.75	FICUS CARICA (BROWN TURKEY)	1 GL	.55
CERCIS CHINENSIS (CHINESE REDBUD)	5 GL	1.65	FICUS REPENS (FIG VINE - STAKED)	1 GL	.60
			••••• FERNS •••••		
CESTRUM PARQUI (NIGHTBLOOMING JASMINE)	1 GL	.60	DRYOPTERIS NOVEBORACENSIS (STOVE FERN)	1 GL	.55

LORINERIA AREOLATA (WOOD FERN)	1 GL	.55	ILEX VOMITORIA FEMINA (FEMALE YAUPON)		
			SHEARED 2-3 FT	5 GL	1.65
ONOCLEA SENSIBILIS (SENSITIVE FERN)	1 GL	.60	" 3-4 FT	5 GL	2.25
			TREE TYPE	5 GL	2.75
POLYSTICHUM ACROSTICHOIDES (CHRISTMAS FERN)	1 GL	.55	ILEX VOMITORIA FEMINA "JEWEL" (FEMALE YAUPON, SMALL LEAF SELECTION)		
.....			2-3 FT	5 GL	1.75
			3-4 FT	5 GL	2.50
FRAXINUS ARIZONICA (ARIZONA ASH)	5 GL	1.75	ILEX VOMITORIA "STOKES" (DWARF YAUPON)	1 GL	.65
GARDENIA FORTUNEI (EVERBLOOMING GARDENIA)	1 GL	.55		2 1/2 GL	1.35
" " TREE-TYPE	5 GL	2.75		5 GL	2.25
GARDENIA RADICANS (TRAILING GARDENIA)	1 GL	.55	JASMINUM FLORIDUM (FLORIDA JASMINE)	1 GL	.55
GELSEMIUM SEMPERVIRENS (CAROLINA JASMINE)	1 GL	.55		5 GL	1.35
STAKED	1 GL	.65	JASMINUM MAGNIFICUM (ANGELWING JASMINE)	5 GL	1.85
DOUBLE STAKED	5 GL	2.75	JASMINUM PARKERI (DWARF JASMINE)	1 GL	.75
GERBERA DAISY	1 GL	.55	JASMINUM POLYANTHUM (LACY JASMINE)	1 GL	.65
GYNERIUM ARGENTEUM (PAMPAS GRASS)	5 GL	1.75	JASMINUM PRIMULINUM (PRIMROSE JASMINE)	1 GL	.55
				5 GL	1.35
HEDERA CANARIENSIS VARIEGATA (VARIEGATED ALGERIAN IVY)			JASMINUM PUBESCENS (PINWHEEL JASMINE)	1 GL	.55
30" STAKED	1 GL	.60	JASMINUM REVOLUTUM (ITALIAN JASMINE)	1 GL	.60
HETEROPTERIS ARGENTEA (REDWING)	1 GL	.55	JUNIPERUS CHINENSIS "BLUE VASE" (BLUE VASE JUNIPER)	1 GL	.60
	5 GL	1.75		5 GL	1.75
HIPPOESTES MACULATA (PINK SPOT)	1 GL	.60	JUNIPERUS CHINENSIS HETZL GLAUCA (BLUE HETZ'S JUNIPER)	1 GL	.60
ILEX CASSINE V. SALICIFOLIA (WILLOW LEAF DAHOON)	1 GL	.55			
	5 GL	1.75	JUNIPERUS CHINENSIS PFITZERIANA (GREEN PFITZER)	1 GL	.60
ILEX CORNUTA - FEMINA (CHINESE HORNED HOLLY)	5 GL	1.85	JUNIPERUS CHINENSIS PFITZERIANA V. GLAUCA (BLUE PFITZER)	1 GL	.60
ILEX CORNUTA BURFORDI (BURFORDI HOLLY)	2 GL	1.35		5 GL	1.75
	5 GL	1.65	JUNIPERUS CHINENSIS V. PROCUMBENS (PROSTRATE JUNIPER)	2 1/2 GL	1.35
ILEX CORNUTA "GRANDVIEW" (DWARF CHINESE HOLLY)	1 GL	.65	KOELREUTERIA PANICULATA (NORTHERN GOLDEN RAIN TREE)	5 GL	1.75
	5 GL	1.75	LAGERSTROEMIA INDICA (GRAPE MYRTLE)		
ILEX CORNUTA V. ROTUNDA (COMPACT CHINESE HOLLY)	1 GL	.65	NEAR EAST	1 GL	.60
	2 GL	1.75	V ALBA WHITE	1 GL	.55
	5 GL	2.25	V COERULEA NANA DWARF BLUE	1 GL	.55
ILEX OPACA "EAST PALATKA" (EAST PALATKA HOLLY)	1 GL	.55	V ROSE - PINK	1 GL	.55
	5 GL	1.75	V RUBRA - RED	1 GL	.55
ILEX OPACA "FOSTER'S #2" (FOSTER'S HOLLY)	1 GL	.55		5 GL	1.35
	5 GL	1.75	V VIOLACEA - PURPLE	5 GL	1.35
ILEX OPACA "HOWARDS" (HOWARD'S HOLLY)	5 GL	1.75	NEW TRADE-MARKED GRAPE MYRTLE LAGERSTROMENIA INDICA		
ILEX OPACA "HUMES #2" (HUME'S HOLLY)	5 GL	1.75	→ FIRE BIRD (RED)	2 GL	1.75
ILEX OPACA "SAVANNAH" (SAVANNAH HOLLY)	5 GL	1.75		5 GL	2.25
			→ NEW SNOW (WHITE)	2 GL	1.75
ILEX OPACA "TABER #3" (TABER HOLLY)	5 GL	1.75		5 GL	2.25
	20 GL	8.50			

LANTANA "GOLD MOUND" (GOLD LANTANA)	1 GL	.55	MYRTUS COMPACTA VARIEGATA (VARIEGATED DWARF MYRTLE)	1 GL	.60
LANTANA - WHITE	1 GL	.55	MYRTUS COMMUNIS VARIEGATA (VARIEGATED ROMAN MYRTLE)	1 GL	.60
LANTANA SELLOWIANA (PURPLE TRAILING)	1 GL	.55	NYSSA SYLVATICA (BLACK GUM)	1 GL	.55
LEUCOPHYLLUM TEXANUM (TEXAS PURPLE SAGE; SENISA)	5 GL	1.65	OSMANTHUS FORTUNEI	5 GL	1.75
LEUCOPHYLLUM TEXANUM V. COMPACTUM (COMPACT SENISA)	1 GL	.75	OSMANTHUS FRAGANS (SWEET OLIVE)	5 GL	1.75
LIGUSTRUM JAPONICUM	1 GL	.55	OSMANTHUS ILICIFOLIUS	5 GL	1.75
(JAPANESE LIGUSTRUM) STD	5 GL	2.00	PARKINSONIA ACULETA (RETAMA)	5 GL	1.85
LIGUSTRUM LUCIDUM	1 GL	.55	PERSEA BORBONIA (BULLBAY)	1 GL	.65
LIGUSTRUM LUCIDUM V. ERECTUM (COMPACT UPRIGHT WAX)	1 GL	.55	PHILODENDRON EVANSI	1 GL	.95
	5 GL	1.65		5 GL	3.75
LIGUSTRUM TEXANUM V. VARIEGATUM (GOLD VARIEGATED WAX)	1 GL	.65	PHILODENDRON "JUNGLE GARDENS"	1 GL	.95
LIQUIDAMBER STRYACIFLUA	1 GL	.55	PHILODENDRON SELLOUM	1 GL	.95
(SWEET GUM)	5 GL	1.75	PINUS CARIBEA (SLASH PINE)	1 GL	.55
LIRIOPE MUSCARI V. VARIEGATA	1 GL	.75		5 GL	1.65
LONICERA PURPUREA	1 GL	.55		20 GL	8.50
(TEXAS PURPLE HONEYSUCKLE)			PINUS PALUSTRIS (LONGLEAF PINE)	5 GL	2.25
LONICERA SEMPERVIRENS (RED HONEYSUCKLE) STAKED	5 GL	1.85	PINUS PINASTER (CLUSTER PINE)	5 GL	1.65
LONICERA YUNNANENSIS	1 GL	.55	PITTOSPORUM TOBIRA (GREEN PITTOSPORUM)	1 GL	.55
(EVERGREEN DWARF HONEYSUCKLE)				5 GL	1.65
MAGNOLIA GRANDIFLORA	1 GL	.55	PITTOSPORUM TOBIRA V. VARIEGATED	1 GL	.60
(SOUTHERN MAGNOLIA)	5 GL	1.65	(VARIEGATED PITTOSPORUM)	5 GL	1.75
MALPIGHIA GLABRA (BARBADOS CHERRY)	1 GL	.55	PLATANUS OCCIDENTALIS (SYCAMORE)	5 GL	1.75
MALPIGHIA GLABRA V. GRACILIS (DAINTY BARBADOS CHERRY)	1 GL	.55	PLUM - FRUITING VARIETY - METHLEY	5 GL	1.75
MICHELIA FUSCATA (BANANA SHRUB)	5 GL	1.65	" BRUCE	5 GL	1.75
MUSA ENSETE	7½ GL	2.00	PLUMBAGO CAPENSIS (BLUE PLUMBAGO)	1 GL	.55
MYRICA CERIFERA (SOUTHERN WAX MYRTLE)	5 GL	1.65	PLUMBAGO CAPENSIS V ALBA (WHITE PLUMBAGO)	1 GL	.65
MYRTUS COMUNIS V NANA COMPACTA (DWARF MYRTLE)	1 GL	.55	PODOCARPUS MACROPHYLLA (JAPANESE YEW)	1 GL	.60
	5 GL	1.65		2 GL	1.50
NERIUM OLEANDER	1 GL	.55	PRUNUS CAROLINIANA (CHERRY LAUREL)	2-3 FT	5 GL
(OLEANDER)	5 GL	1.50		3-4 FT	5 GL
FOLLOWING VARIETIES:			PUNICA CHICO (CARNATION FLOWERED POMEGRANATE)	1 GL	.60
SINGLE WHITE	MRS. ROEDING		PUNICA GRANATUM	1 GL	.55
DOUBLE WHITE	PAMELA MAAS		(FRUITING POMEGRANATE)	5 GL	1.65
DOUBLE ROSE	CARDINAL RED				
SEALY PINK	DOUBLE DARK RED				
VARIEGATED	DOUBLE SEALY RED				
SINGLE YELLOW, DOUBLE YELLOW, SHELL PINK					

PUNICA GRANATUM V NANA (DWARF POMEGRANATE)	1 GL	.55	WISTERIA FLORIBUNDA ARBOREA V ALBA (WHITE TREE WISTERIA)	5 GL	3.50
PYRACANTHA CRENATO-SERRATA (PYRACANTHA)	1 GL	.75	YUCCA SPEC.	5 GL	1.65
ESPALIERED	5 GL	1.95	20 GAL	7.50 TO	20.00
	5 GL	4.50	YUCCA ELATA	1 GL	.60
QUERCUS NIGRA (WATER OAK)	5 GL	2.50	YUCCA FILAMENTOSA	5 GL	2.00
QUERCUS VIRGINIANA (LIVE OAK)	5 GL	2.50	YUCCA MACROCARPA	1 GL	.60
RAPHIOLEPIS OVATA (INDIAN HAWTHORN)	5 GL	1.75	YUCCA MOHAVENSIS	1 GL	.60
ROBINIA PSEUDOCACIA (BLACK LOCUST)	5 GL	1.85	• • • • • FIELD STOCK • • B&B • • • • •		
ROSA BRACTEATA "MERMAID" (MERMAID ROSE)	5 GL	2.00	ERIOBOTRYA JAPONICA (LOQUAT)		
ROSMARINUS OFFICINALIS (ROSEMARY)	1 GL	.65	30-36"	1.75	
SAPIUM SEBIFERUM (CHINESE TALLOW TREE)	1 GL	.55	3-4'	2.00	
5 GL	1.65	4-5'	2.75		
SENECIO CONFUSUS (MEXICAN LOVE VINE)	1 GL	.55	FEIJOA SELLOWIANA (PINEAPPLE GUAVA)		
SERISSA FOETIDA V. VARIEGATA			18-24"	1.00	
1 GL	.55		24-30"	1.35	
TAXODIUM DISTICHUM (SWAMP CYPRESS)	5 GL	1.75	30-36"	1.85	
TECOMARIA CAPENSIS (CAPE HONEYSUCKLE)	1 GL	.60	GARDENIA FORTUNEI (EVERBLOOMING GARDENIA)		
TRACHELOSPERMUM ASIATICUM (LANTERN GLO JASMINE) STAKED	1 GL	.65	18-24"	.75	
TRACHELOSPERMUM JASMINOIDES (CONFEDERATE JASMINE STAKED)	1 GL	.65	2-3'	1.00	
TRACHELOSPERMUM SPECIES (CONFEDERATE JASMINE GROUND COVER)	1 GL	.60	GARDENIA GRANDIFLORA (CAPE JASMINE)		
TRACHELOSPERMUM SPECIES "WHITE MIST" GROUND COVER	1 GL	1.00	18-24"	.75	
TRACHYCARPUS FORTUNEI (WINDMILL PALM)	2 GL	1.50	2-3'	1.00	
VIBURNUM JAPONICUM (JAPANESE VIBURNUM)	1 GL	.60	ILEX OPACA "EAST PALATKA" (EAST PALATKA HOLLY)		
2 GL	1.35		30-36"	2.50	
5 GL	1.65		3-3 1/2'	3.00	
VIBURNUM MACROPHYLLUM (LARGE LEAF VIBURNUM)	2 GL	1.35	3 1/2-4'	3.50	
5 GL	1.65		4-5'	4.00	
VIBURNUM SUSPENSUM (SANDANKWA VIBURNUM)	1 GL	.65	5-6'	5.00	
VINCA MINOR - SMALL LEAF (PERIWINKLE)	1 GL	.55	5-6'		
VINCA MAJOR - GREEN	1 GL	.55	6-7'		
VINCA MAJOR V VARIEGATA (VARIEGATED PERIWINKLE)	1 GL	.60	(YAUPON WITH BERRIES ADD 10%)		
WISTERIA FLORIBUNDA V ALBA (WHITE WISTERIA VINE)	5 GL	1.50	JUNIPERUS CHINENSIS "BLUE VASE" (BLUE VASE JUNIPER)		
			12-15"	1.25	
			15-18"	1.50	
			18-24"	1.75	
			24-30"	2.25	
			LAGERSTROEMIA INDICA (CRAPE MYRTLE) (WHITE - RED - PURPLE)		
			3-4'	1.15	
			4-5'	2.25	
			DWARF BLUE 18-24"	1.25	



LIGUSTRUM LUCIDUM (WAX LEAF LIGUSTRUM)		PEARS: B.R.	
15-18"	.75	LACONTE	7-9' 1 1/2" CAL. 1.35
18-24"	.80		
24-30"	1.25	KEIFFER	7-9' 1 1/2" CAL. 1.35
30-36"	1.50		

PRUNUS CAROLINIANA (CHERRY LAUREL) SHEARED		GARBER	7-9' 1 1/2" CAL. 1.35
2-3'	1.10		
3-4'	1.50		
4-5'	2.00		

PUNICA GRANATUM (FRUITING POMEGRANATE)	
2-3'	1.00
3-4'	1.25

SPIREA REEVESIANA FL. PL. (REEVE'S DOUBLE SPIREA)	
18-24"	.75
24-30"	.90
30-36"	1.35

• • • • • TREES • • • • •

ALBIZZIA JULIBRISSIN (MIMOSA)	
6-7'	1.00
7-8'	1.75
8-10'	3.50

CERCIS CANADENSIS (RED BUD)	
3/4-1" CAL.	1.00
1-1 1/2"	1.50
1 1/2-2"	2.75
2-2 1/2"	3.75

CERCIS CANADENSIS V ALBA (WHITE FLOWERING RED BUD)	
3-4'	5.00
4-5'	6.50
5-6'	8.00

FRAXINUS VELUTINA F. ARIZONICA (ARIZONA ASH)	
5-6'	1.00
1-1 1/2" CAL.	1.50
1 1/2-2"	2.50
2-2 1/2"	3.50
2 1/2-3"	5.00
3-3 1/2"	7.50
3 1/2-4"	10.00

MAGNOLIA GRANDIFLORA (SOUTHERN MAGNOLIA)	
3-3 1/2'	2.25
3 1/2-4'	2.85
4-5'	4.00
5-6'	5.75
6-7'	7.00
7-8'	10.00

SAPIUM SEBIFERUM (CHINESE TALLOW TREE)	
1-1 1/2" CAL	1.65

